

MICROLINKS TECHNOLOGY CO., LTD.

Users Manual

Installing VT300 Device Operates Manual

MLTC

2011/02/01 Update Ver.2.4A

Installing VT300 Device Operates Manual

Contents

1. Please insert CD to CD-Rom Slot.....	3
2. Install VT300 application program	4
2.1 Setup Application Program	4
2.2 Welcome to the VT300 Setup Wizard.....	4
2.4 Now installing program	5
2.5 Complete install	6
2.6 After installation completed.....	6
3. Install VT300 USB Driver	7
3.1 Start to install driver program	7
3.2 Welcome to use SPMP3052 PC Device setup wizard	7
3.3 Now installing.....	9
3.4 Install Complete	10
3.5 After Installation Completed.....	10
4. Uninstall VT300 AP	11
4.1 Choose VT300 AP's Uninstall driver see [Fig. 4-1]	11
4.2 Confirm to Uninstall VT300 AP	11
4.3 Uninstalling VT300 AP.....	11
In processing of uninstall the VT 300 AP, see [Fig. 4-3]	11
4.4 Finish Uninstall	12
VT300AP was successfully removed from your PC, please click OK to finish.....	12
5. Uninstall VT300 Driver	13
5.1 Choose VT300 Driver uninstall. See [Fig.5-1]	13
5.2 Preparing to Uninstall. See [Fig. 5-2]	13
5.3 Confirm to remove the VT300 Driver.	13
Please make sure if you want to completely remove the Driver. See [Fig 5-3].....	13
5.4 In process of uninstall	14
In processing of uninstall the VT 300 Driver, see [Fig. 5-4]	14
5.5 Finish Uninstall VT300 driver	14

VT300 Installing

The package provides setup CD. If the setup CD is missing or damaged, please download setup files from <http://www.vitiny.com>. Please see the following steps to complete the VT300 installation.

- **Step 1:1. Please insert CD.**
- **Step 2:2. Install VT300 application program.**
- **Step 3:3. Install VT300 driver.**

To uninstall VT300 AP and driver in your PC, please follow below 2 steps to complete the Uninstall.

- **Step 1: 4. Uninstall VT300 AP.**
- **Step 2: 5. Uninstall VT300 USB digital video driver.**

1. Please insert CD to CD-Rom Slot.

Please insert the product CD to the CD-Rom slot. The computer will read the CD automatically and will pop up a window shown below:



Fig.1-1 setup window

If the shown setup window can not pop up, please go to CD-ROM to select Autorun.exe execute file, which the same will pop up as Fig.1-1 setup window. Autorun.exe is shown below:



Fig.1-2 execute icon

2. Install VT300 application program

Please select the image [Fig 1-1] to start setup VT300 application program.

2.1 Setup setup Program

First, click “Install VT300 application program”, next, please select a language, see [Fig. 2-1], the initial language will follow up the PC OS. If you want to cancel setup please click “Cancel” then click “OK”.

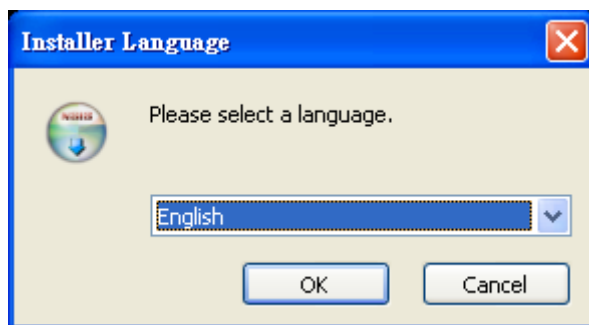


Fig. 2-1 setup language window

2.2 Welcome to the VT300 Setup Wizard

After choosing the language, go to welcome to the VT300 setup wizard window see [fig.2-2], then please click “Next” to continue. If want to cancel please click “Cancel”.

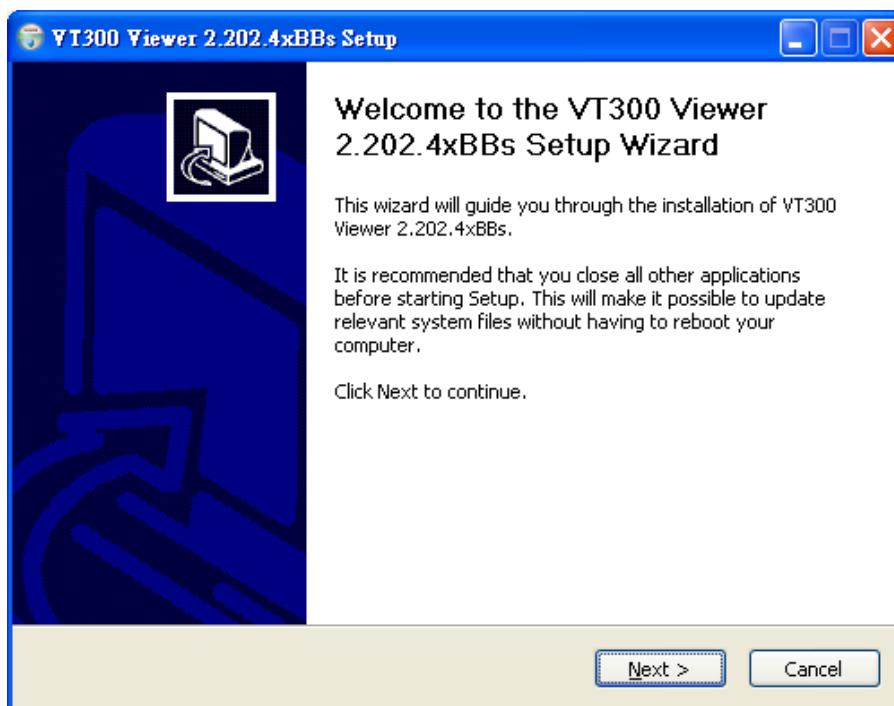


Fig. 2-2 welcome to the VT300 setup wizard

2.3 Choose installation route

Next step please choose the installation route window see [Fig.2-3]. If want to change file route click “Browse” to change setup path, then please click “install” then start installing.

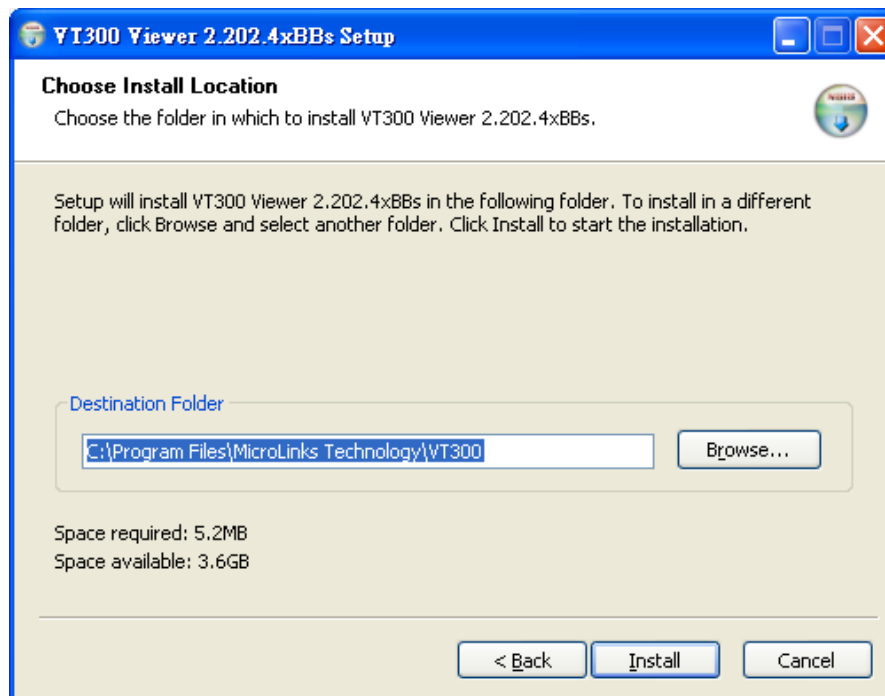


Fig. 2-3 choose installation route

2.4 Now installing program

Continue install wizard will start installing program as directory [fig.2-3].

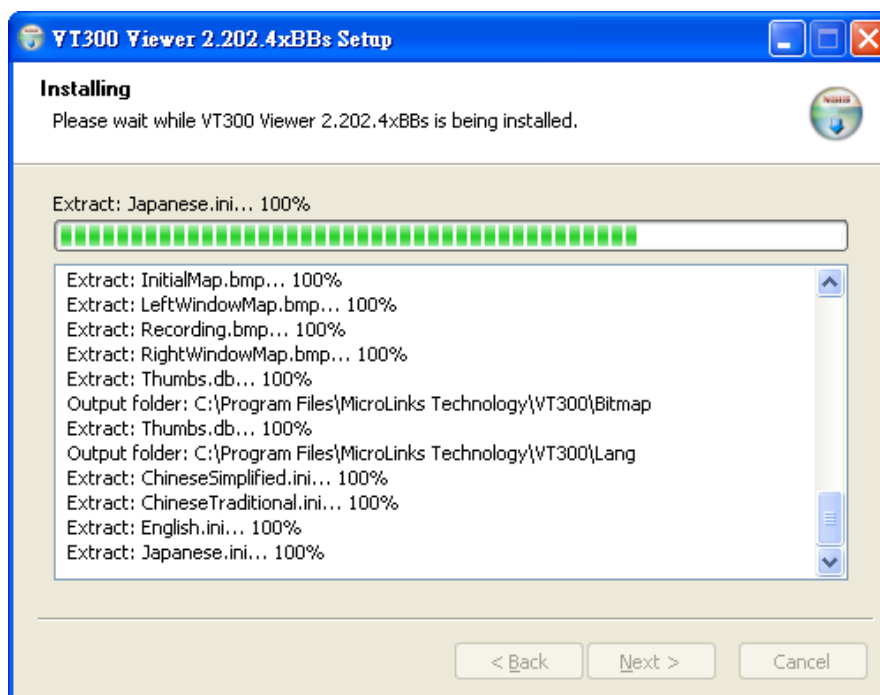


Fig.2-4 now installing

2.5 Complete install

When the VT300 program completes installation (Fig.2-5). Please click “Finish”.

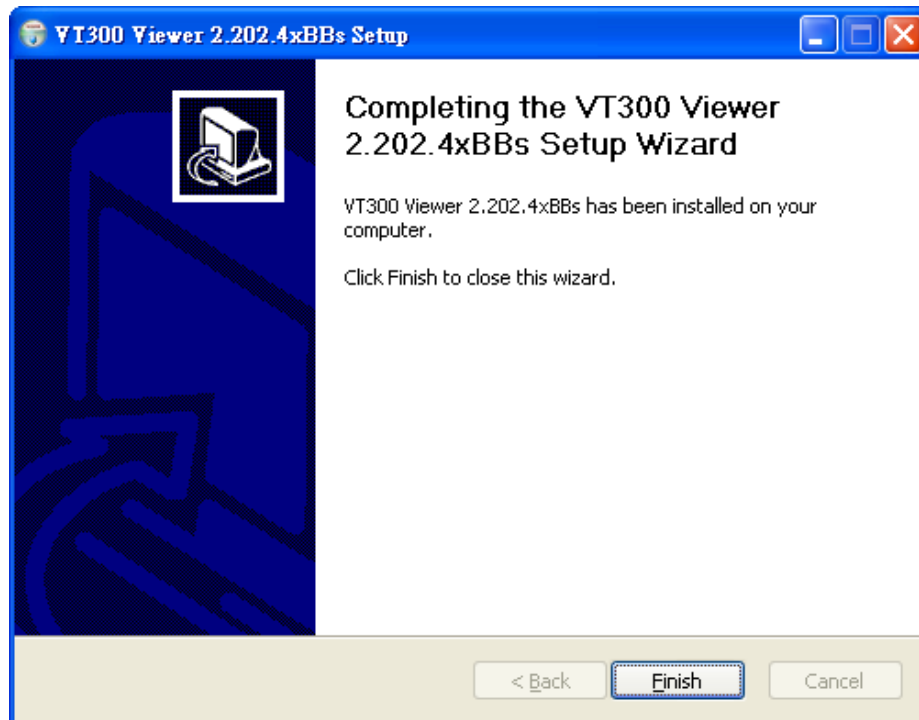


Fig.2-5 VT300 wizard install completed

2.6 After installation completed

Desktop will show VT300 shortcut as [Fig.2-6].



Fig.2-6 VT300 shortcut

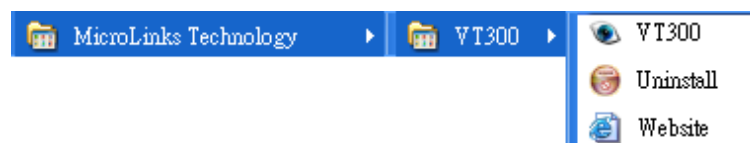


Fig. 2-7 VT300 at position all programs

3. Install VT300 USB Driver

The driver is a must. If you do not install the driver, you can't use VT300 AP.

3.1 Start to install driver program

Please select Fig.1-1 to start Installing VT300 driver. After click setup VT300 driver button, it will pop up [Fig.3-1], now be ready to install the driver. If cancel installation, please click "cancel".

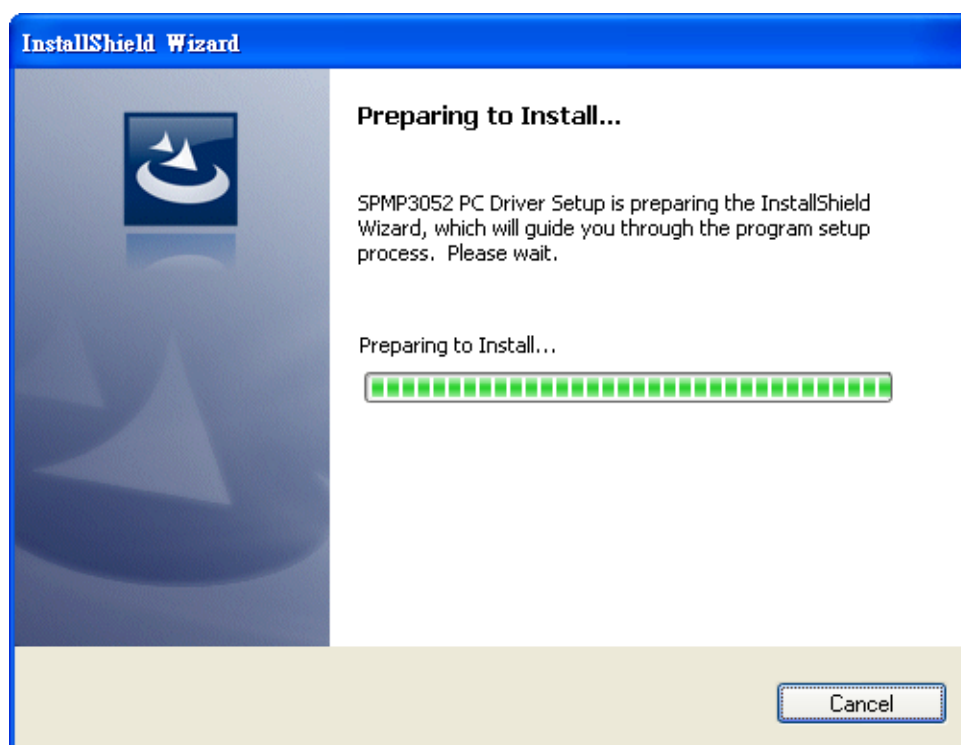


Fig.3-1 Preparing to install

3.2 Welcome to use SPMP3052 PC Device setup wizard

Before install VT300 driver, please make sure the SPMP3050 driver does not exist in the same PC, if so, please remove SPMP3050 then install VT300 driver.

Preparing to install, please follow under setups.

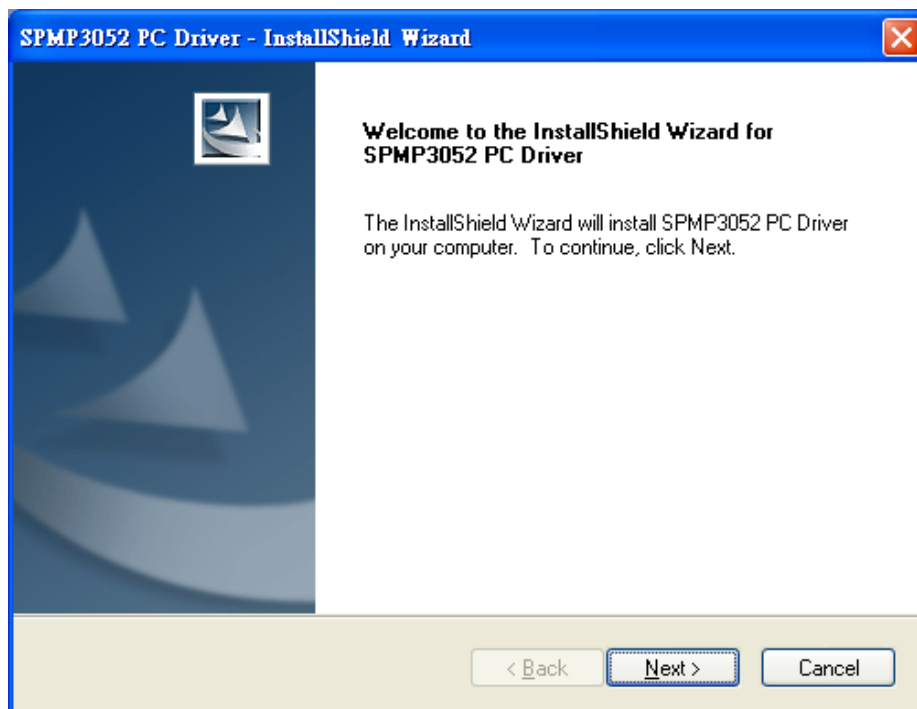


Fig.3-2 welcome to SPMP3052 PC driver InstallShield Wizard.

Please choose complete option and click “Next” to continue. If user wants to change install path, please choose custom option.

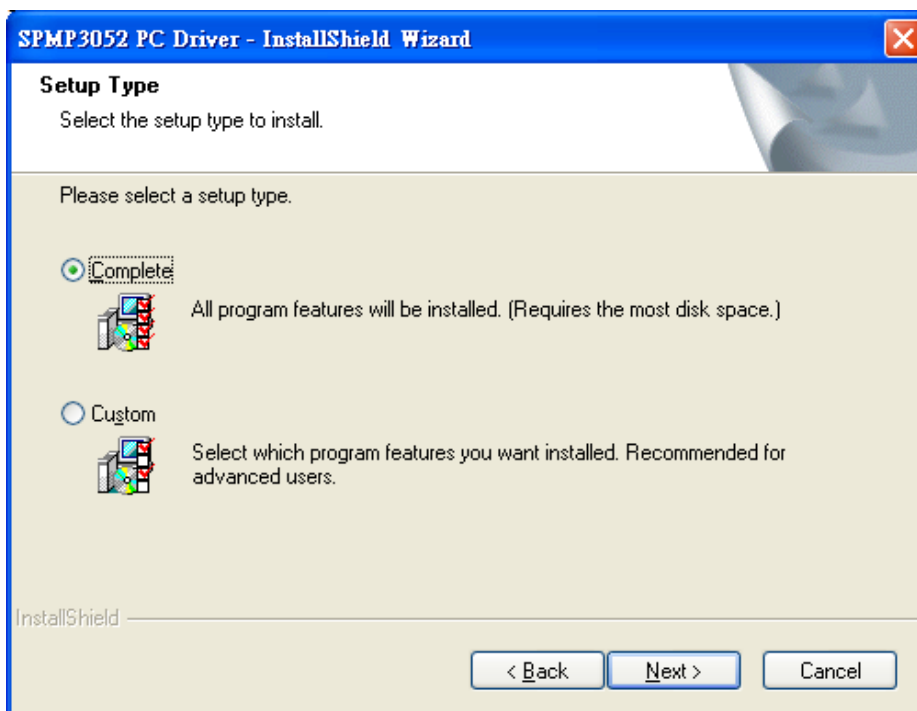


Fig.3-3 Select the setup type

Prepare to start copying files, if you want to change or review any settings, click “Back”. If install settings were confirmed, click “Next” to start copying files.

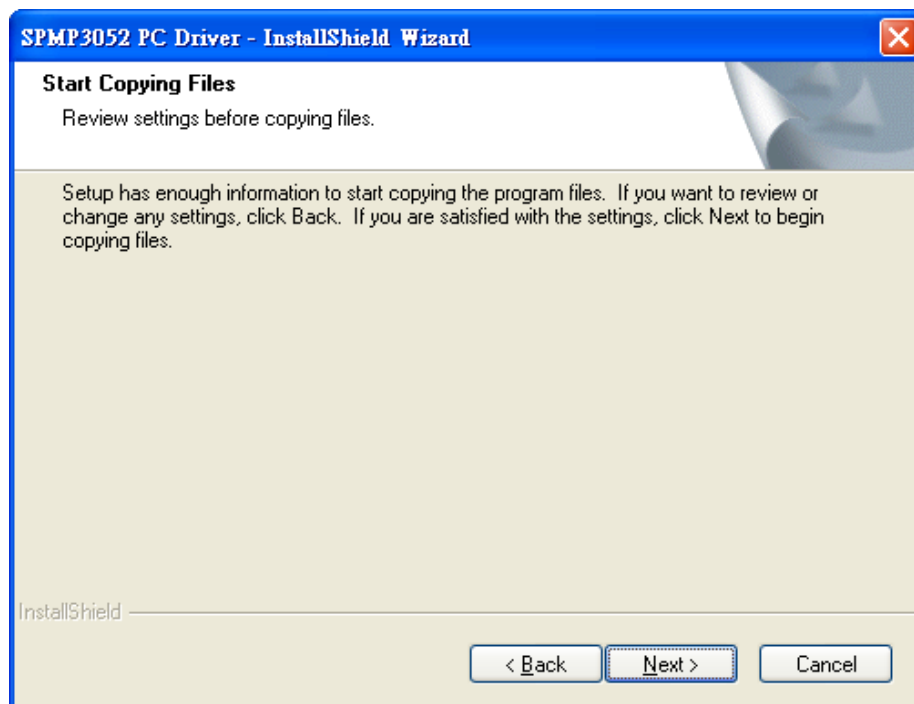


Fig.3-4 Review settings before copying files

3.3 Now installing

See [Fig 3-5], SPMP3052 PC Driver is now installing; if you want to stop installing, please click "Cancel".

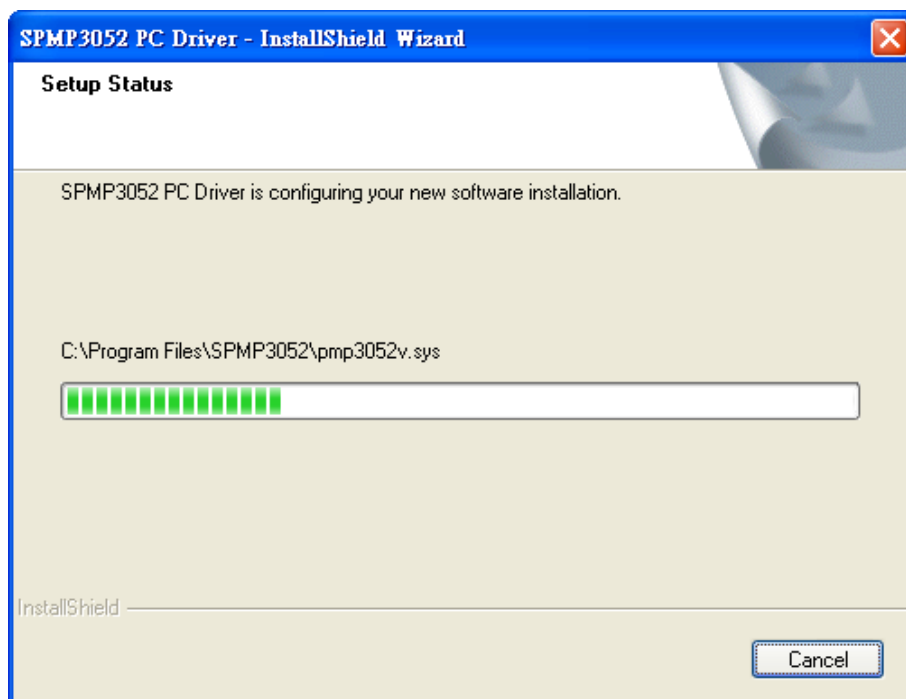


Fig.3-5 Now installing SPMP3052 PC Device

3.4 Install Complete

Complete SPMP3052 PC device setup (Fig. 3-5), click “finish” and then driver program is completed.

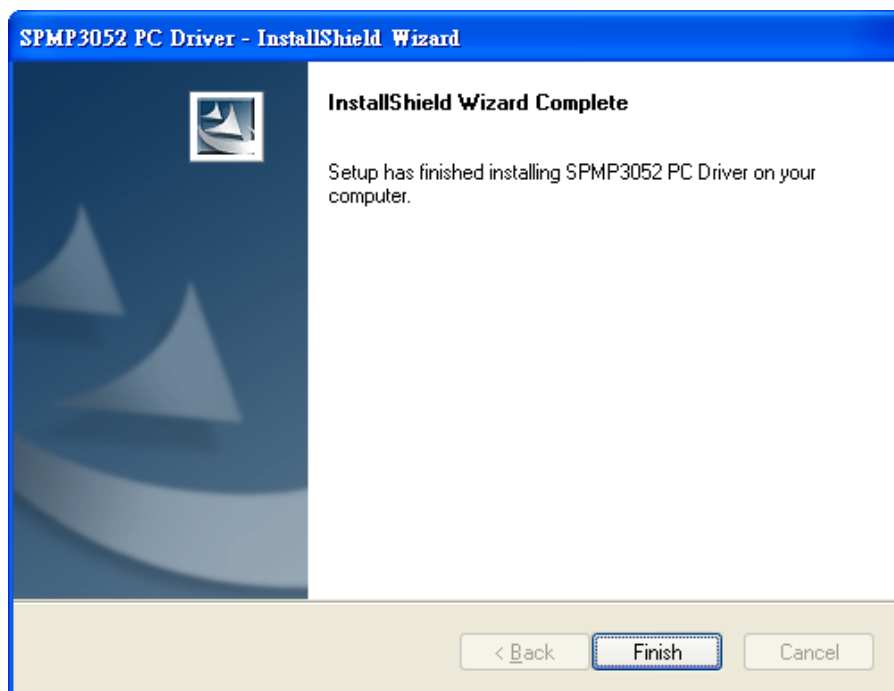


Fig. 3-6 SPMP3052 PC device installations complete

3.5 After Installation Completed

After installation is completed, click Start -> all programs you will see SPMP3052 PC driver file shown as [Fig.3-7].



Fig.3-7 SPMP3052 PC driver is at all programs position.

VT300 can be executed from ICON AMCap see [Fig. 3-7]. However, AMCap is a simple tool for preview only. It can't support image process or functions in the VT300 AP.

4. Uninstall VT300 AP

4.1 Choose VT300 AP's Uninstall driver see [Fig. 4-1]

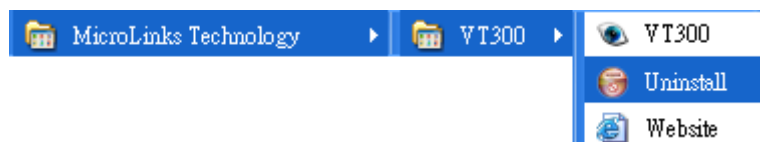


Fig. 4-1 Uninstall VT300 AP

4.2 Confirm to Uninstall VT300 AP

Please make sure if you want to completely remove VT300 application program. See Fig 4-2.

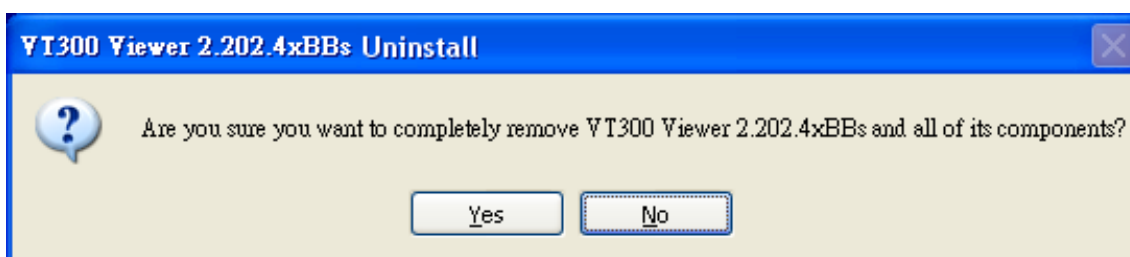


Fig. 4-2

4.3 Uninstalling VT300 AP

In processing of uninstall the VT 300 AP, see [Fig. 4-3]

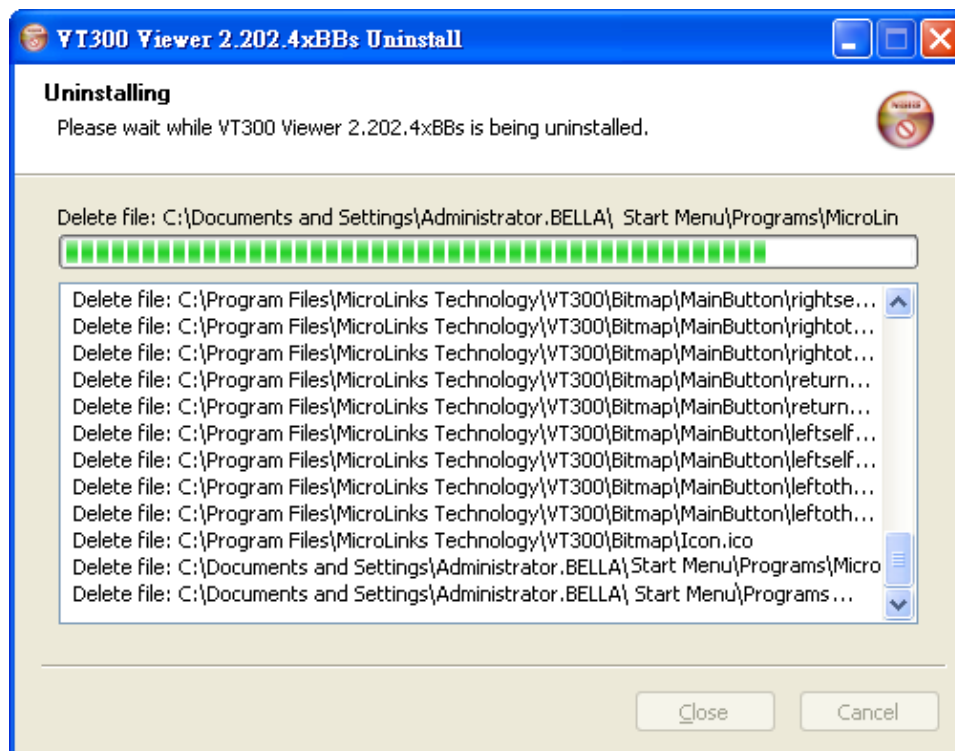


Fig.4-3 Uninstalling VT300 AP

4.4 Finish Uninstall

VT300AP was successfully removed from your PC, please click OK to finish.

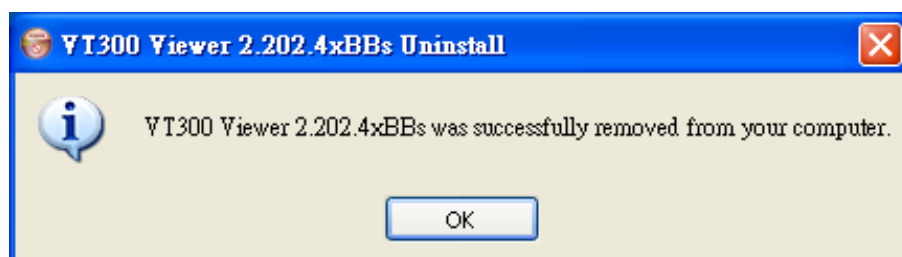


Fig. 4-4 Uninstall Completed

5. Uninstall VT300 Driver

5.1 Choose VT300 Driver uninstall. See [Fig.5-1]



Fig. 5-1 Uninstall VT300 USB Driver

5.2 Preparing to Uninstall. See [Fig. 5-2]

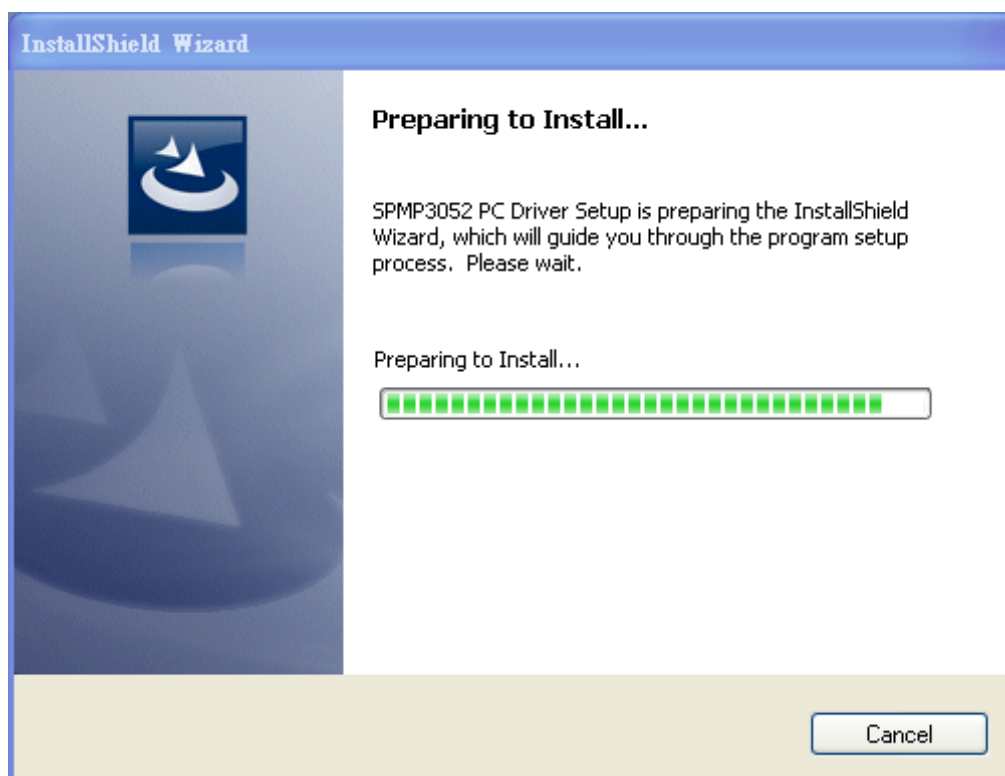


Fig. 5-2 preparing to uninstall

5.3 Confirm to remove the VT300 Driver.

Please make sure if you want to completely remove the Driver. See [Fig 5-3]

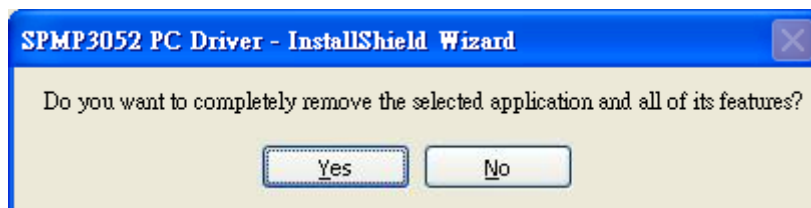


Fig. 5-3 Confirmation of uninstall

5.4 In process of uninstall

In processing of uninstall the VT 300 Driver, see [Fig. 5-4]

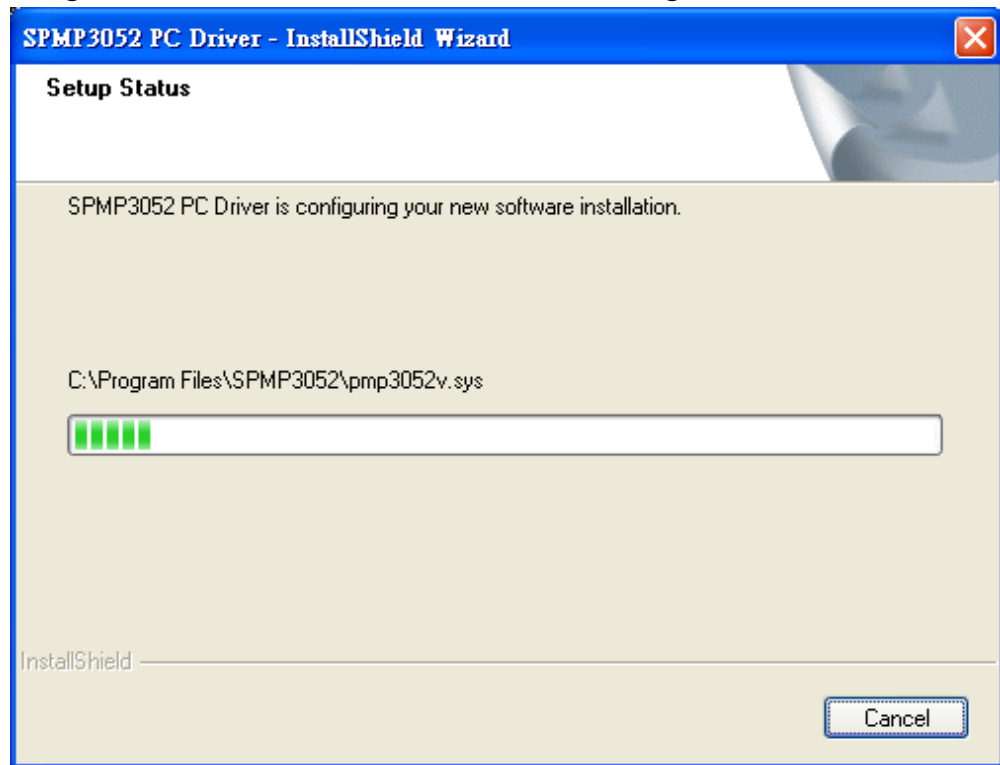


Fig.5-4 Uninstalling Driver

5.5 Finish Uninstall VT300 driver

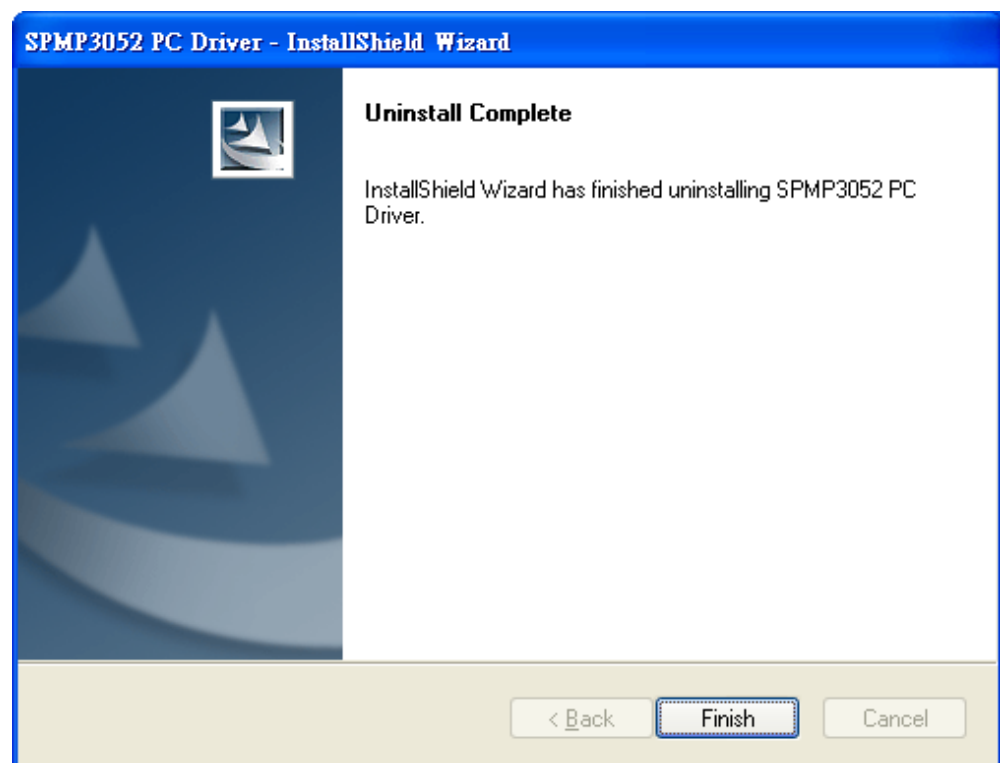


Fig.5-5 Finish uninstall